

# Shop House Facade Design, Kaoshiung, Taiwan, 1981

**Ming-Hung Wang**

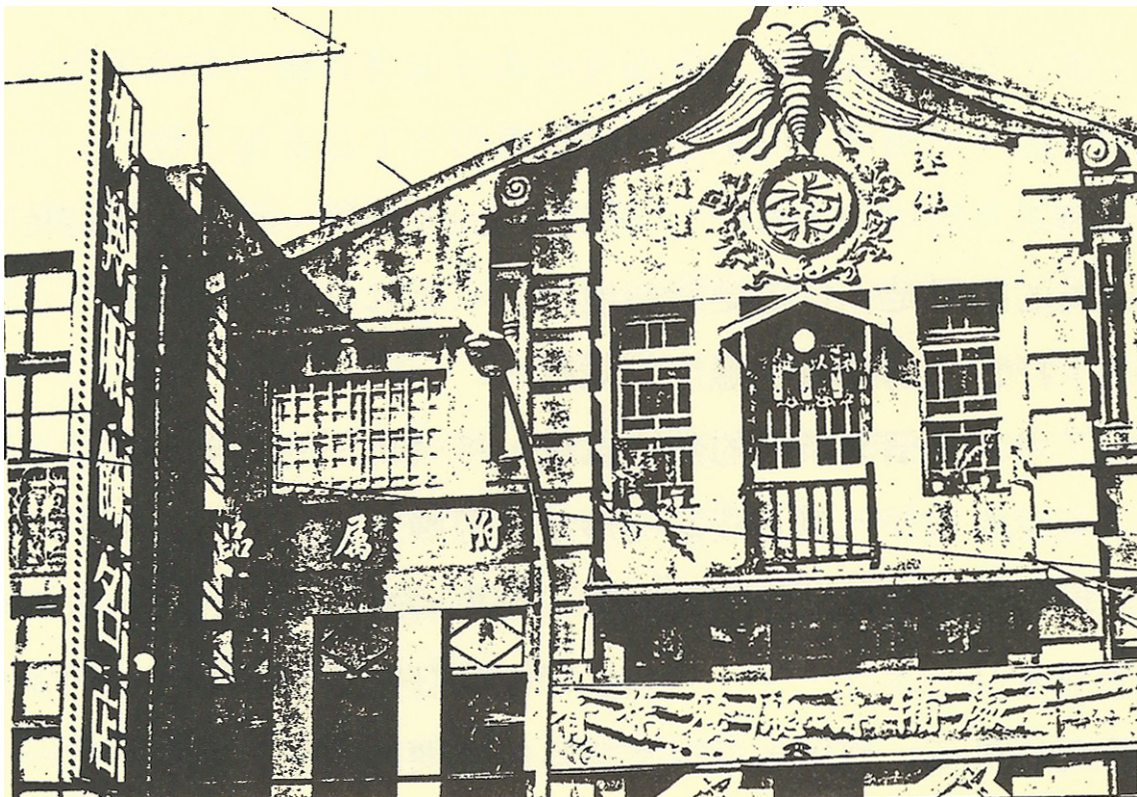
*Professor of Architecture and Urban Design*

*National Cheng Kung University, Tainan, Taiwan*

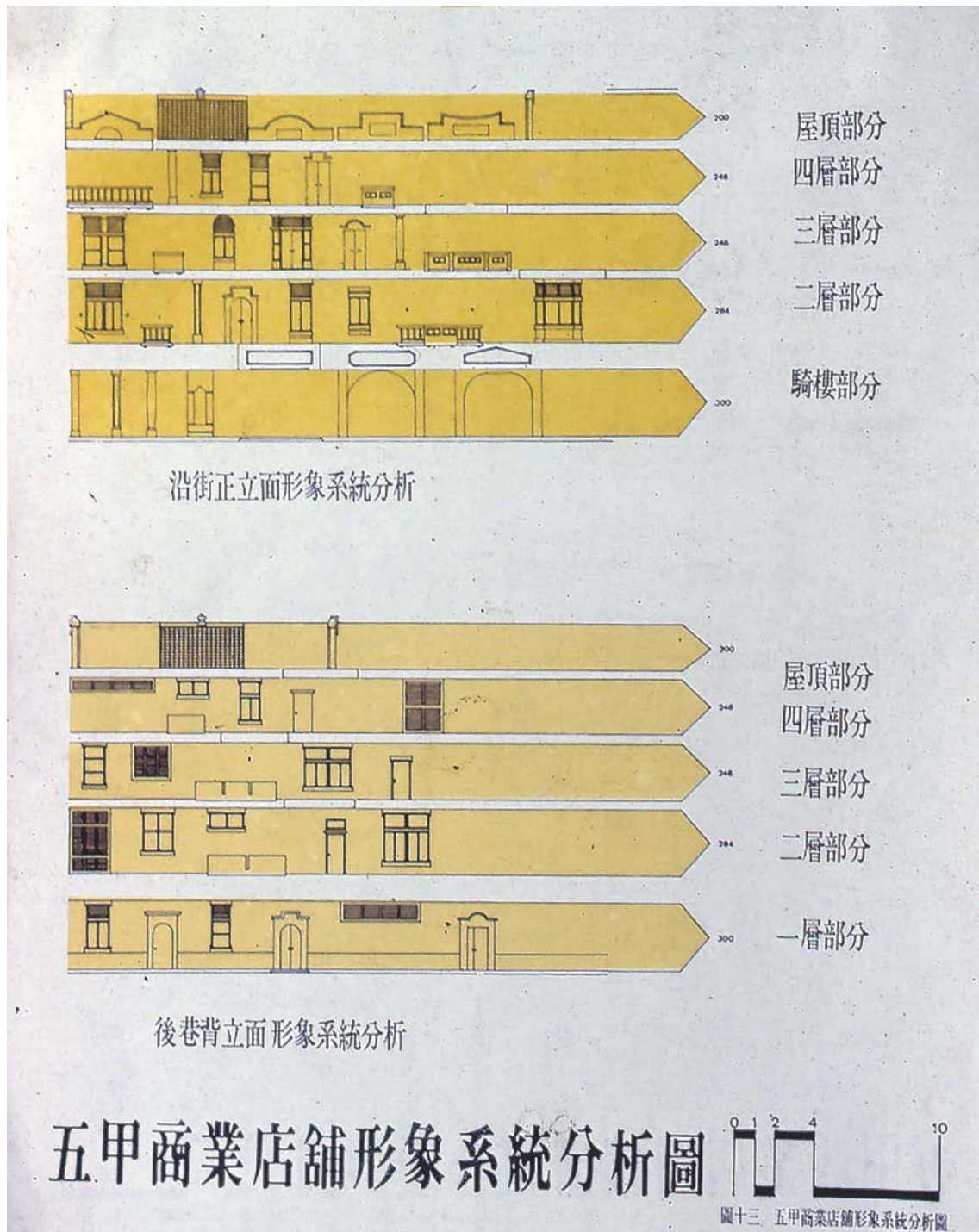
The following images illustrate a façade design method for the shop houses of a large neighborhood development in the fringe of Kaoshiung, Taiwan, 1981. The method itself is quite straightforward:

1. Select key elements of existing shop houses from around the city region.
2. Develop variants of the key elements with respect to different sizes and fronts of shop houses.
3. Establish rules for distributing elements to façade zones.
4. Generate façade variants according the rules.

Students of National Cheng Kung University under my guidance conducted the design, which was part of the planned development project commissioned by the Housing and Urban Development Bureau of Taiwan central government in 1981.

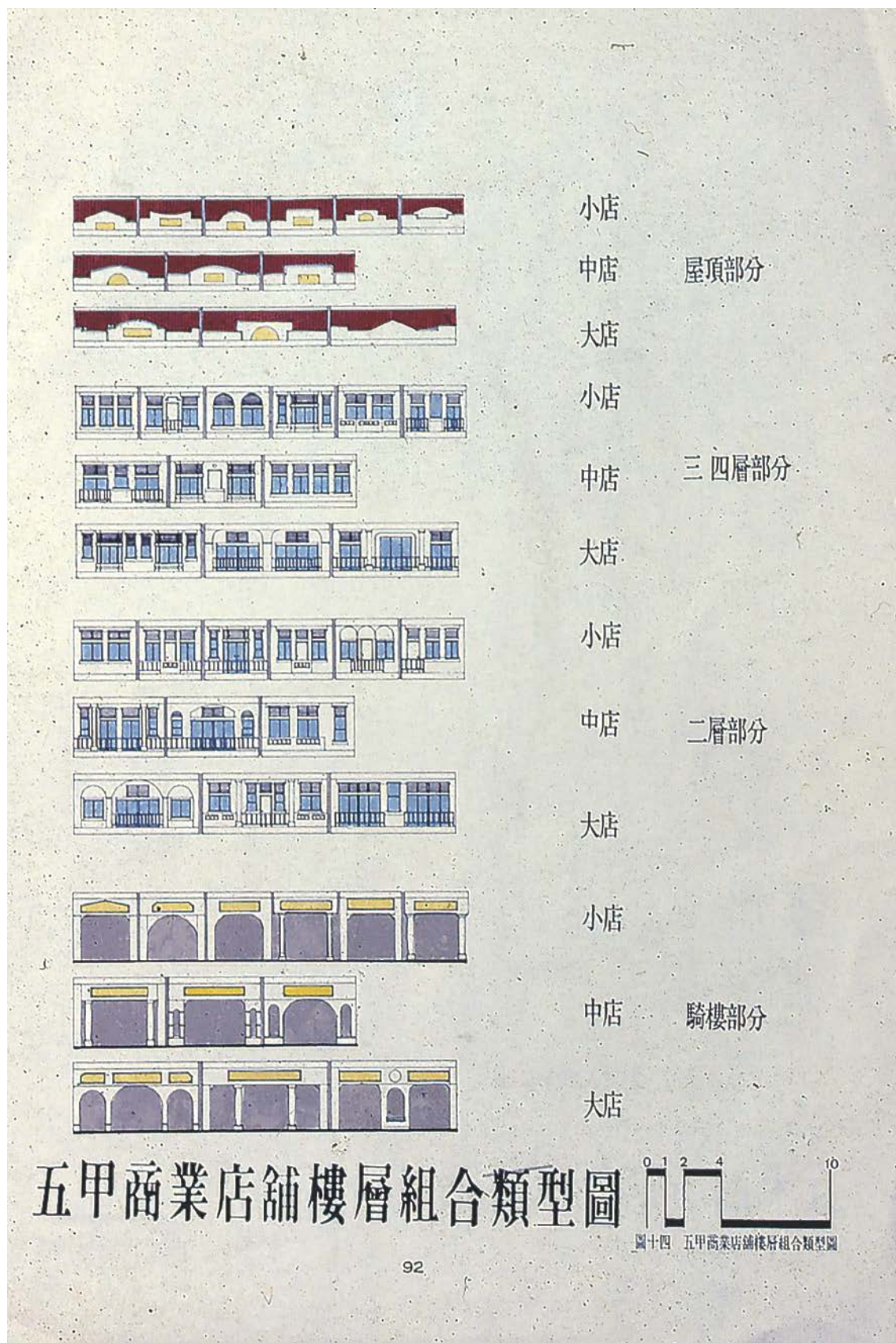


Typical shop house facade in South Taiwan



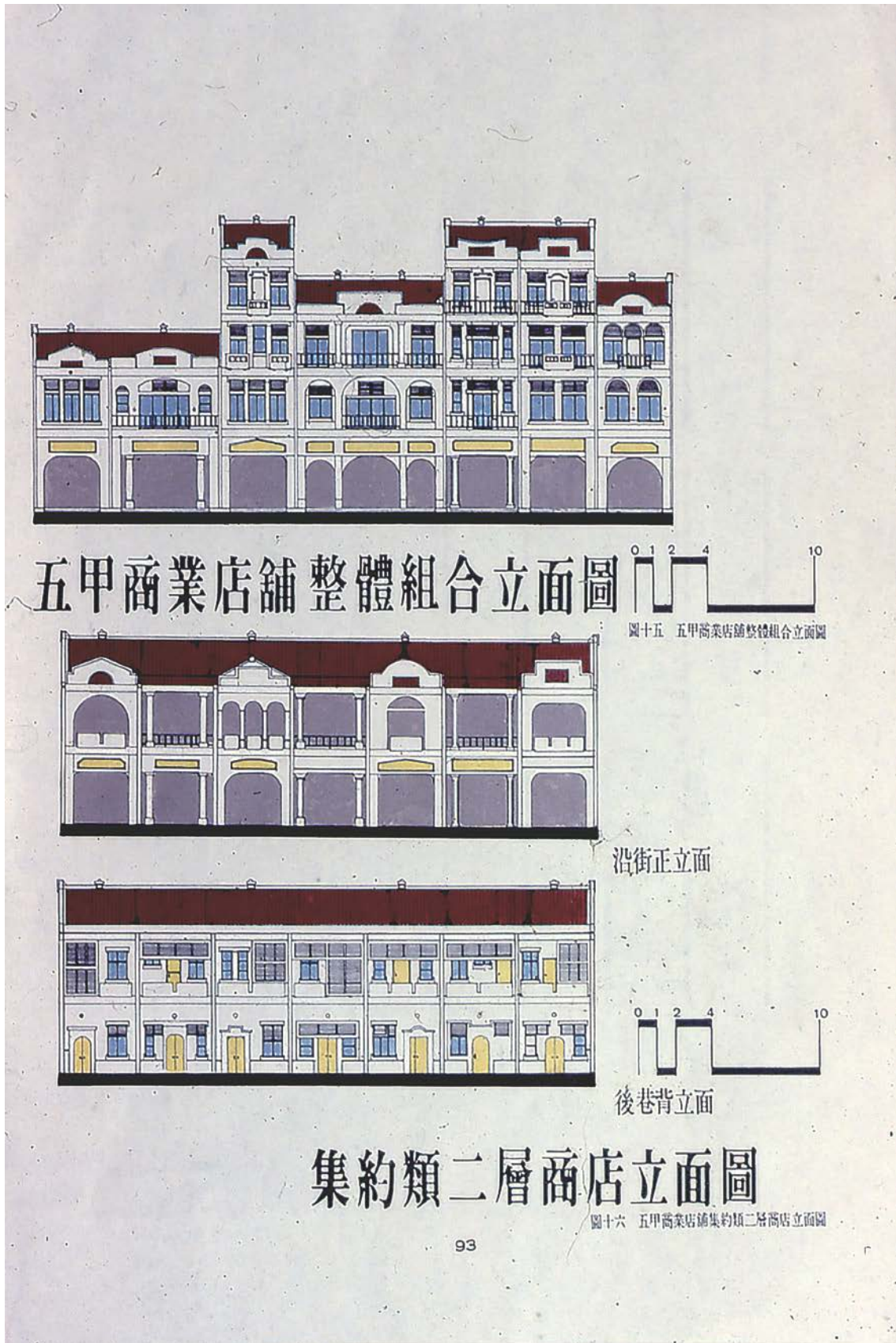
Developing facade elements and  
distributions in facade zones





Partial compositions with respect to different shop fronts





Demonstrations of facade variations





Site model



Shop houses model